

Mission

We embrace death and dying as a normal part of life and provide, at no cost to guests and families, the support people need to make the most of every moment.

Clarehouse®

Living. Loving. Sharing.

We envision a loving community where all people have the care they need at life's end so no one walks their final days alone.

Vision

Annual Report 2024

FROM THE EXECUTIVE DIRECTOR

Clarehouse was founded on the belief that every individual deserves compassionate, high-quality care in the comfort of their own community. From the very beginning, we have been committed to delivering care that is not only practical but emotional and spiritual—ensuring dignity and peace for those we serve.

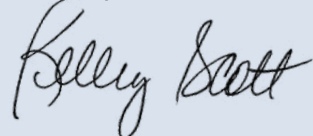
2024 has been a year of growth, resilience and extraordinary compassion, all made possible by the support of our dedicated staff, volunteers, partners and donors. Our future is filled with opportunities as we continue to innovate, adapt and expand our services to meet the needs of our community. And there is still so much work to be done!

Over the next few decades, our society will face unprecedented challenges in caregiving as Americans aged 65 and older will increase from 40 million to nearly 90 million. Our already stressed healthcare system is ill-equipped to deal with the ballooning demands for healthcare providers and bedside caregivers. The implications of this population shift are a driving force behind our strategic plan to create a Learning Center, where we can prepare families, neighbors, lay caregivers and healthcare professionals for end-of-life needs.

Clarehouse is uniquely positioned to support, share and teach best-practice, hands-on care for terminally ill people, relying on our 21 years of service to continually reach beyond the sacred walls of our home. As we enter this new era, we remain committed to 24/7 loving care in this home built and funded by our generous donors. With joy, we will enlist new support to sustain the Clarehouse Learning Center that will transform even more lives.

I am deeply grateful to all who share our passion for this mission and vision of loving care and intentional living. Thank you for your continued trust, generosity and support that make Clarehouse a place where every guest and their family feels truly at home.

Warmly,



Kelley Scott

Comfort

We believe that no one should suffer when comfort is possible and all people deserve the very best care we can offer.

Dignity

We honor each individual, knowing that dignity, peace and kindness ALWAYS matter.

Connection

Together with our community, we foster connections to surround people who are dying with loving support.

Education

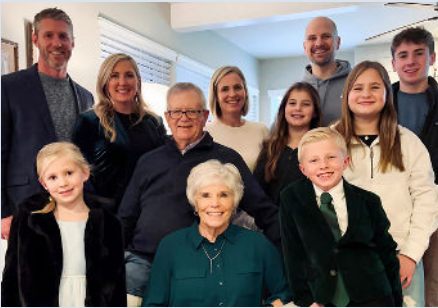
Through state-of-the-art education, we empower people to live more intentionally.

Sharing

We expand and deepen our impact by creatively sharing our innovative model locally and nationally.

COMMUNITY IMPACT

Vicki Sheffield & Family



“When my mom, Vicki Sheffield, arrived at Clarehouse, our family was worn down by months of her battle with stage four cancer. It had been only four months since we learned of her diagnosis, and in that time she endured painful treatments, surgeries and a life-threatening infection. Clarehouse gave us 73 unexpected days of peace, comfort and love.

The care she received was extraordinary. The staff’s attentiveness brought her comfort and dignity, and she even improved slightly, allowing her to reconnect with loved ones, share meaningful conversations, enjoy her favorite Braum’s ice cream and say her goodbyes.

For our family, Clarehouse was an oasis—a chance to breathe after so much hardship. For my mom, it was a place where she could pass peacefully, surrounded by those she loved. We are forever grateful for the grace and care Clarehouse gave her and our family.” *Morgan Bice*

“The services provided by Clarehouse are valuable and necessary in our present-day circumstances. When we think of all the people Clarehouse has helped already, and the vast number of people still in need, we feel not only deeply grateful for your courage and vision, but also strongly compelled to help support your good cause. Our recent donation is not as expansive as our emotional and intellectual support, but we hope it provides at least a small amount of assistance toward the continuation of your services.”



Eleanor, Brad, Emma & Paul Mullen

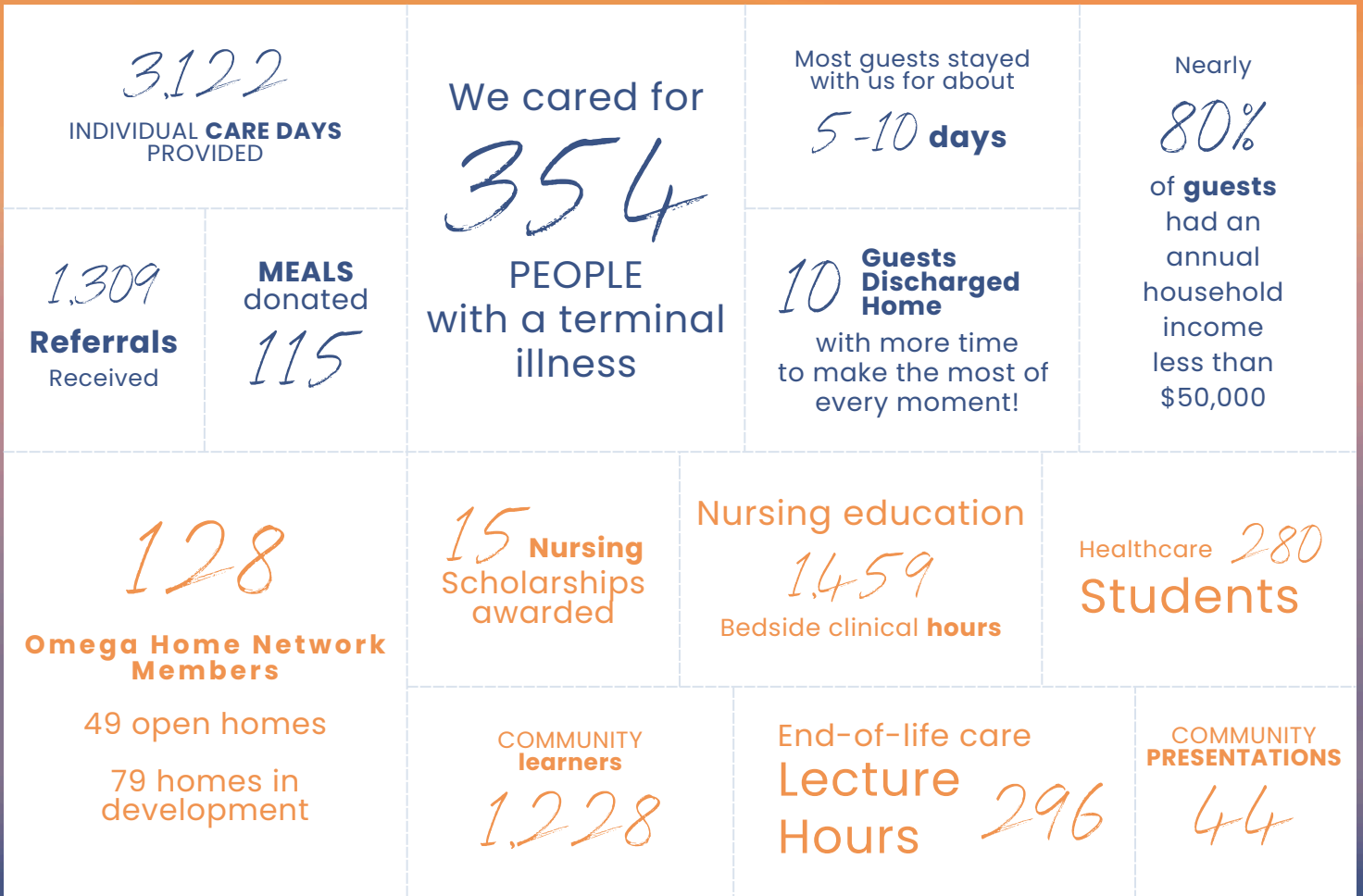


“It was truly a blessing beyond words to be able to utilize a facility like Clarehouse during my father, Paul Mullen’s last days. The staff was awesome! I cannot come up with words strong enough to express our appreciation for everything that Clarehouse staff and volunteers did while he was in your care.

My father always worried about being dumped in a nursing home to die and this was the exact opposite of what he feared his whole life. The facility was wonderful and the care that staff took with my father was outstanding. I cannot thank you and your staff/volunteers enough for the exceptional job they did taking care of him and us. Even very late on Monday evening, staff lined the entryway in honor of his passing as he left the facility. It was very heartfelt and meant a tremendous amount to me & my wife as we followed him out the door.”

Brad Mullen

IMPACT IN NUMBERS



When numbers challenge:

46% of our guests are admitted to medical hospice and Clarehouse on the same day. These implications are immense, as people are reeling from a rapid progression of bad news and being poorly prepared. Expanding education is critical to help people initiate goals of care conversations, make plans and access resources. Our educational programming reaches the general public as well as our hospice and referral partners.

The Clarehouse 10-year strategic plan features expanded education capacity to offer additional programming, experiences and resources. We envision a multi-layered educational effort centered in a free-standing, contemplative learning space for the expansion of current clinical and community programming, research and cultivation of the Social Model Hospice home model of care. The **Clarehouse Learning Center** programming will continue to facilitate our vision of creating a loving community where death and dying are normalized, everyone has the care they need at life's end and no one walks their final days alone.

REVENUES

Total: \$2,630,948

Contributions
& Grants

\$1,659,377

Special
Events

\$414,302

Investments
& Other

\$557,269

EXPENSES

Total: \$1,781,375

Program
Services

\$1,505,733

Management

\$78,388

Fundraising

\$197,254

NET ASSETS

Total: \$8,981,305

Assets

\$9,225,994

Liabilities

\$244,689

A Note from the Treasurer

The economic environment in 2024 remained quite strong. Net Investment Income was positive again this year, reflecting the continued strength of the stock market. Contributions and grants experienced a significant increase, while the annual Clarehouse Moonstruck special event set a record revenue amount. Overall, it was an exceptionally good financial year for Clarehouse. We are extremely grateful for the **1,843** individuals, foundations, corporations and organizations who made our work possible. This support enables us to provide our services free of charge. Thank you!

Craig Jones 

National Partnership

Through a Shared Services Agreement, Clarehouse provides staff time to operate Omega Home Network, a nonprofit national membership organization of homes like Clarehouse across the US. This year, OHN compensated Clarehouse **\$21,500** to provide management, administrative and programming support.

DECADES OF VOLUNTEER LOVE

Reagan - Teens

"I started volunteering and it felt like home. I tell people I volunteer at Clarehouse because of my uncle, but on another level, I volunteer because of families like mine. I want to be a volunteer a family can trust or talk to and be comfortable with. I want to be the volunteer who makes the slightest bit of difference during a hard time."



Avery - Twenties

"I feel lucky to be able to support the amazing staff and be a part of something so special. Volunteering has taught me about compassion, empathy and the value of every moment. It's been such a rewarding experience and I feel lucky to be able to contribute in this way."



Hilary - Thirties

"We had a loved one, our grandpa Pete, stay at Clarehouse in May 2024. Even though he was only at Clarehouse for a short time before he passed, the experience made a lasting impact on my family and me. The staff sets Clarehouse above any other place. I loved seeing how lovingly my grandpa was treated and knew I wanted to be a part of the team of volunteers."



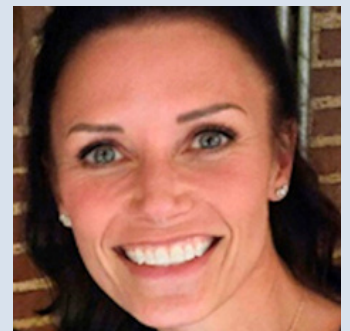
Amanda - Forties

"My friend's mom was at Clarehouse and while visiting, I saw a need. I volunteer because I absolutely love everyone I volunteer with. I love being able to help families during a time that is tough, just bringing a smile or kind gesture to brighten their day. I have met some incredible people and I leave Clarehouse better than when I went in."



Shirah - Fifties

"I volunteer at Clarehouse because the mission of helping people make the most of every moment, especially at the end of life, speaks to my heart. As a nurse/caregiver I enjoy being able to spend time with families and guests in a loving home. The staff and other volunteers are top notch at Clarehouse!"



Over 100 volunteers contributed 8,500 hours, with an in-kind value of \$230,000. Their dedication and love are immeasurable. We are grateful for this dedicated group of volunteers who span the ages.



John - Sixties

"I had a friend who spent her final four days at Clarehouse and I visited her. I was very impressed and when I retired from my education career, I decided to volunteer. It is an opportunity for volunteers to care for, love and encourage those who are going through the most difficult times of their lives."



Claudia - Seventies

"Clarehouse taught me how to be a loving, active, receptive, presence as someone you loves dies. My mother-in-law, Millie Arthrell, passed at Clarehouse—being with her there was transformative for me. The annual retreats have been life changing. The education programs and the Community Conversations have always been enriching."



Brenda - Eighties

"I mostly provide Welcome Wednesday lunches every month. One of my passions is cooking and sharing that love with others. Friends and family often think that volunteering at a home for the dying would be depressing, but I quickly change their minds by sharing what a peaceful, loving home you immediately feel."

Write a story that never ends...

Imagine writing your own story with *no ending*. With a Legacy Giving Plan you can do just that! You can create a lasting impact that reflects your values, passions and the causes you care about most while ensuring they can do good work for years to come.

Ready to optimize your retirement or estate plan? Our expert strategists will help design a plan tailored to your needs and passions. We'll guide you through each step, ensuring you understand your available opportunities while creating a lasting impact for future generations.

The pen is in your hand. As we step into 2025, make the move to write a story that never ends and leave a legacy for those to come.

Why wait?

Contact our Legacy Giving Team today to write your story!
Chris Miller | 918.491.0079 | chris@tagpg.org



FROM OUR BOARD PRESIDENT

As we close another year, I am filled with a deep sense of pride and gratitude for the remarkable progress we continue to make at Clarehouse. Our commitment to providing compassionate end-of-life care, at no cost, remains unwavering and our impact continues to grow beyond the walls of this home.

We reached new heights in the Clarehouse mission this year. Our staff and volunteers provided care to 354 guests and their families, ensuring each guest entrusted to our care experienced dignity, comfort and peace in their final days. This team of loving and tireless individuals is the driving force behind our success, going above and beyond to uphold our values and deliver exceptional care daily.

The support from our community has been nothing short of extraordinary. Through donor generosity, we raised nearly \$2 million, which has been crucial in sustaining operations and expanding outreach. Our fundraising events, including Moonstruck and the Every Moment Counts Run&Walk, were not only successful in raising funds critical for our operations but also in fostering a sense of unity and shared purpose within our community.

Looking ahead, we are excited about the opportunities to further our mission in 2025. Our goals for the coming year are robust and meaningful, and we are confident we will achieve them with the continued support of friends like you!

We want to extend our heartfelt thanks to our board members, staff, volunteers, donors and community partners. Your dedication and generosity makes our work possible. Together, we are making a profound difference in the lives of those we serve.

Andrew Polly



Board of Directors

Andrew Polly - Board President
Rebecca Mitchell - Vice President
Craig Jones - Treasurer
Ben Lenski - Secretary

Charles Anderson
Dwan Borens
Charles Hill
Pam Kiser
Tiffany Long
Sherry Marcum

Greg Parker
Caroline Quinn
Evan Scranton
Crystal Stewart
David Stiles
Kevin Turner

Leadership Team

Kelley Scott - Executive Director
kscott@clarehouse.org

Kate Halsmer - Administrative Director
khalsmer@clarehouse.org

Britni Smith - Education Director
bsmith@clarehouse.org

Christian McLain - Development Director
cmclain@clarehouse.org

Julie Courcier - Support Services Director
jcourcier@clarehouse.org

Cheyenne DeRamus - Care Team Leader
cderamus@clarehouse.org

Clarehouse[®]

7617 S Mingo Rd, Tulsa OK 74133
918.893.6150 | clarehouse.org

 Omega
Home Network

Proud Member



DONATE